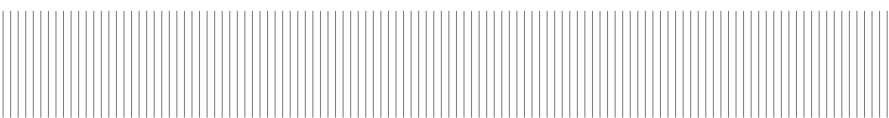
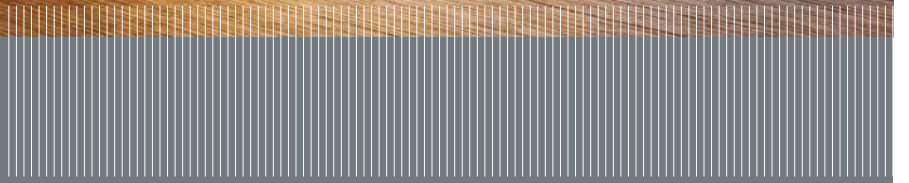




Optima Doors

Workspace redefined





Door type: Frameless glass doors within Optima 117 single glazing and Optima 97 advanced system drywall crosswalls.

Doors

Glass or solid? Hinged, pivoting or sliding? Framed or frameless? There are so many options when it comes to doors and we hope that you will find the perfect solution that meets both your aesthetic and performance requirements amongst our extensive range of door types. Each of our partitioning systems has been developed to be fully compatible with a number of different door types, giving you the flexibility to design a workable space that is both practical and stylish.



Door type: Single glazed doors in Microflush aluminium frames with Quad pivots, within Optima 117 single glazed office fronts. Futurewall demountable panel crosswalls with Revolution 97 double glazed clerestory glazing.

Single Glazed Doors

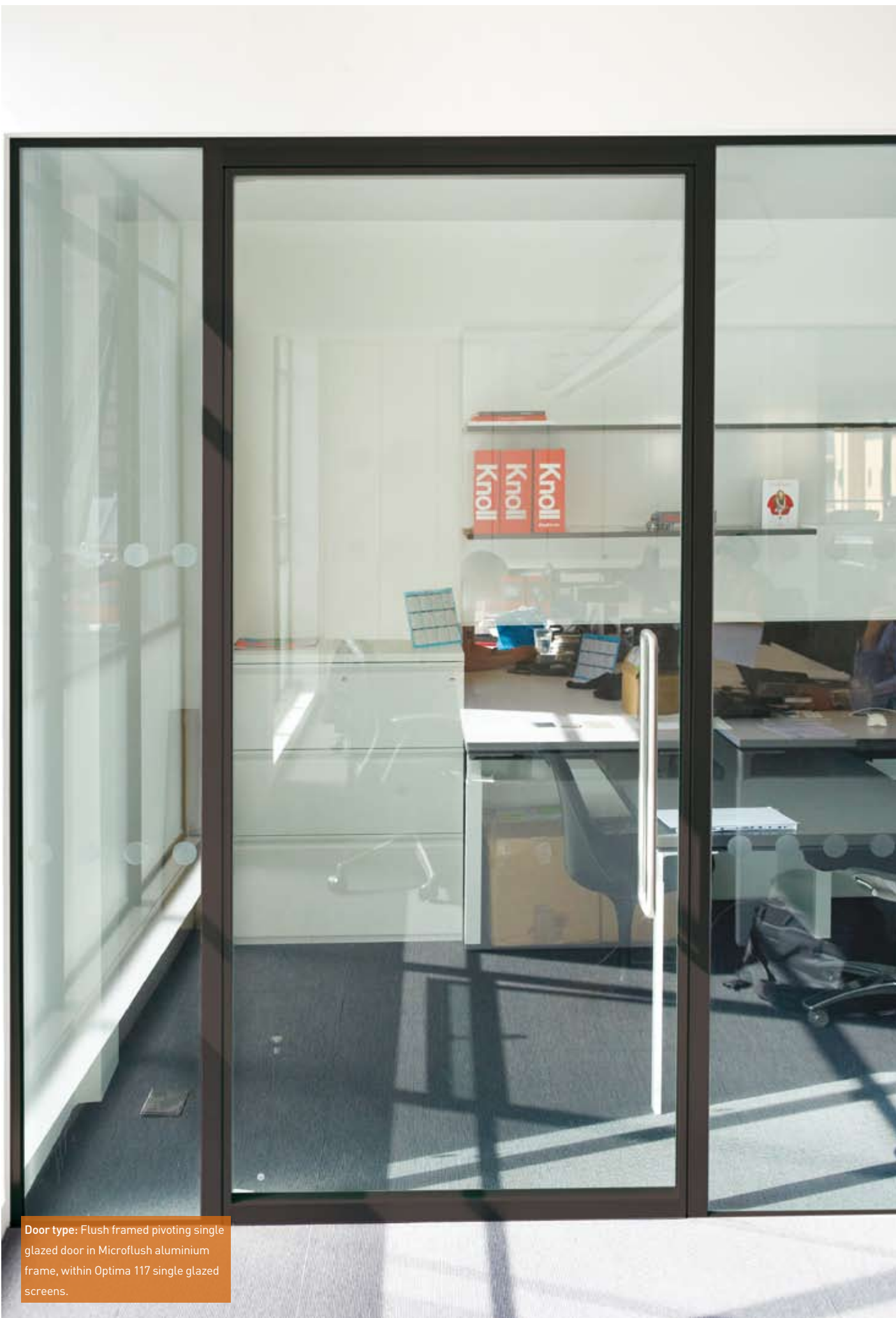
Workspace redefined



Door type: Single glazed doors in Type One aluminium frames with patch hinges, within Optima 117 single glazing and Optima 97 advanced system drywall crosswalls.



Door type: Frameless glass Spine door within Optima 117 single glazing with stainless steel clad two-part deflection head to achieve +/-40mm.



Door type: Flush framed pivoting single glazed door in Microflush aluminium frame, within Optima 117 single glazed screens.



Door type: Framed sliding glass door within Optima 117 single glazed screens.

Sliding Doors

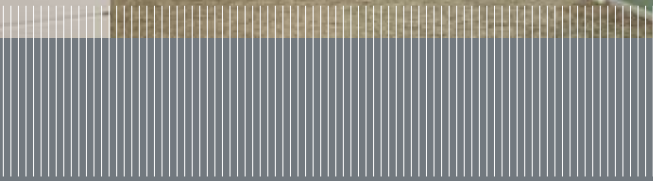
Workspace redefined



Door type: Kinetic glass sliding doors within Optima 117 single glazed screens.



Door type: Framed glazed sliding door within Optima 117 single glazed screens, with partial height Futurewall crosswalls and clerestory glazing.



Pocket Sliding Doors

Workspace redefined



Door type: Double glazed pocket sliding doors within Revolution 97 mullion-free double glazed screens.



Door type: Single glazed pocket sliding door within Revolution 97 mullion-free double glazed screens.



Door type: Double glazed doors in Microflush aluminium frames, within Revolution 97 mullion-free double glazed screens.

Double Glazed Doors

Workspace redefined



Door type: Double glazed doors in Microflush aluminium frames, within Revolution 97 mullion-free double glazed screens.



Door type: Flush, frameless double glazed door within Revolution mullion-free double glazing.



Door type: Flush, frameless double glazed pivoting doors with low iron, back painted glass.



Door type: 54mm thick rebated American black walnut veneered doors in hardwood frames within Revolution 97 mullion-free double glazed screens.



Door type: 44mm thick bamboo veneered timber doors in Microflush aluminium frames within Optima 117 single glazed office fronts (1) and Revolution 97 mullion-free double glazed meeting rooms (2).

1



2

Timber Doors

Workspace redefined



Door type: 44mm thick hinged timber doors in Type One aluminium door frames, within Optima 117 single glazed screens.

Door Type Comparisons	
Single Glazed Doors	Description
Frameless Single Glazed Door	This is the basic pivoting glass door for use in a single glazed partition, typically pivoting in-line on the partition centreline and self-closing on a floor spring.
Glass Spine Door	A frameless door with a rigid stainless steel faced spine on the trailing edge of the leaf.
Single Glazed Door in Microflush Aluminium Frame	A slimline aluminium frame with a glass door leaf hung on either lift-off hinges or offset pivots.
Single Glazed Door in Type One Aluminium Frame	The basic aluminium door frame with lock/latching glass door on lift-off hinges for use with Optima 97, 117 and 217 partition systems.
Flush Framed Door	Working on the same principle as the flush 54mm timber door, this is a single glazed door leaf with a 54mm aluminium frame for a flush fit.
Sliding Doors	Description
Kinetic Sliding Door	This is the basic 'frameless' glass sliding door for use in a single glazed partition.
Framed Sliding Door	Taking the proven track and running gear of the Kinetic door and framing the door leaf for improved acoustic performance.
Single Glazed Pocket Sliding Door	taking the proven track and running gear of the Kinetic door and using it in a double glazed partition.
Double Glazed Doors	Description
Flush Frameless Double Glazed Door	Using the same principle of centreline pivoting as the single glazed door and used in a double glazed partition for improved acoustic performance.
Double Glazed Door in Microflush Aluminium Frame	The same principle as the single glazed door but on offset pivots only.
Timber Doors	Description
Timber Door in Microflush Aluminium Frame	The same principle as the single glazed door and capable of accepting a 44mm or 54mm flush timber door leaf.
Timber Door in Type One Aluminium Frame	The same principle as the glass door with a 44mm timber leaf.
Timber Door in Timber Frame	44mm or 54mm timber door leaf in door frame to project specific design requirements.



Door type: 54mm thick rebated timber doors and frames within Optima 117 single glazed screens and Optima 97 advanced system drywall.

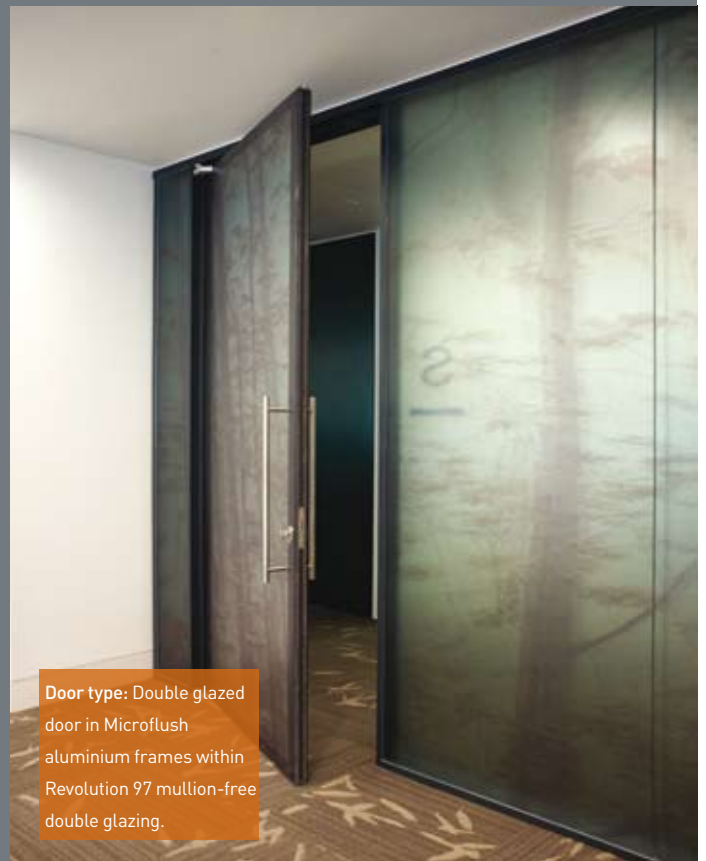
Specification Information

Product Description				
Single Glazed Doors	Hinge Options	Standard Leaf Thickness	Maximum Height	System Compatibility
Frameless Glass Door	In line Pivots	10mm or 12mm depending upon floor to ceiling height	3000mm	97, 117
Spine Door	In-line Pivots	10mm or 12mm depending upon floor to ceiling height	3000mm	97, 117
Microflush Door Frame	Butt Hinges or Offset Pivots	10mm or 12mm depending upon floor to ceiling height	3000mm	97, 117, 217, Revolution 69 & 97
Type 1 Door Frame	Butt Hinges	10mm Or 12mm depending upon floor to ceiling height	3000mm	97, 117, 217
Flush Framed Door	Offset Pivots	12mm toughened glass	3000mm	97, 117, 217, Revolution 69 & 97
Sliding Doors	Sliding Direction			
Kinetic Sliding Door	Single LH, RH	10mm or 12mm depending upon floor to ceiling height	3000mm	117
Framed Sliding Door	Single LH, RH	8mm depending upon floor to ceiling height	3000mm	117
Single Glazed Pocket Sliding Door	Single LH, RH	12mm depending upon floor to ceiling height	3000mm	Revolution 97
Double Glazed Doors	Hinge Options			
Frameless	In-line Pivots	47mm	3000mm	97, 217, Revolution 69
Microflush Door Frame	Offset pivots	47mm	3000mm	97, 217, Revolution 69 & 97
Timber Doors	Hinge Options			
Microflush Door Frame	Butt Hinges or Offset Pivots	44mm or 54mm	3000mm	97, 117, 217, Revolution 69 & 97
Type 1 Door Frame	Butt Hinges or Offset Pivots	44mm	3000mm	97, 117, 217
Timber Door Frame	Butt Hinges or Offset Pivots	44mm or 54mm	3000mm	97, 117, 217, Revolution 69 & 97

Note: Please contact Optima technical sales team for information relating to glass thickness in relation to floor to ceiling height. Acoustic tests based upon 12mm toughened glass, unless stated otherwise. For further information, please contact our technical team on (01494) 492725.



Door type: Flush, frameless double glazed doors within flush bonded Revolution mullion-free double glazing.



Door type: Double glazed door in Microflush aluminium frames within Revolution 97 mullion-free double glazing.

Courtyard House West End Road High Wycombe Bucks HP11 2QB t +44 (0) 1494 492 725

Doors

Optima Doors
Workspace redefined

www.optimasystems.com

